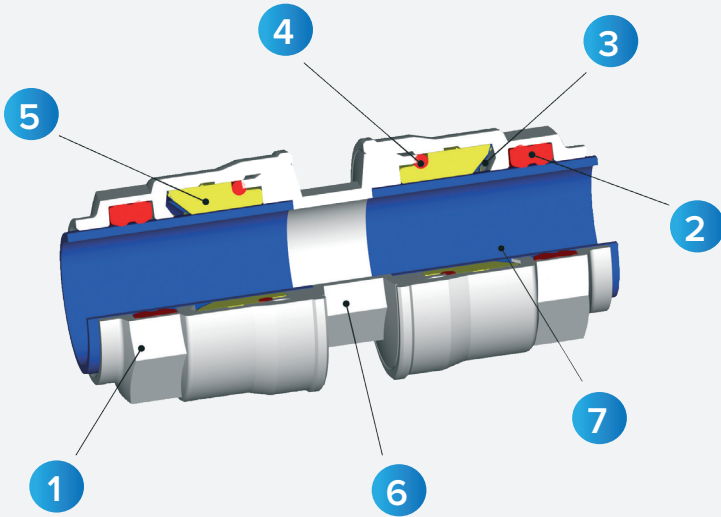


SPECIFICATIONS & ASSEMBLING GUIDE

Ø20 | Ø25 | Ø32 | Ø40 | Ø50 | Ø63



COMPONENT PARTS AND MATERIALS

1. Nut | Nickel-plated brass (aluminium Ø63)
2. Seal | NBR
3. Clamping Washer | INOX AISI 301
4. O-ring | NBR
5. Safety Ring | Technopolymeric
6. Body | Nickel-plated brass (aluminium Ø63)
7. Extruded Aluminium Tube | Calibrated and powder coated



REFERENCE STANDARD



DIAMETER RANGE (MM)

Ø20 | Ø25 | Ø32 | Ø40 | Ø50 | Ø63



PRESSURE RATING

0.99 bar (-0.099 MPa)
16 bar (1.6 MPa)



TEMPERATURE TOLERANCES

- 20 °C
+ 80 °C



TUBE CHARACTERISTICS

Extruded Aluminium	Designations UNI EN 573-3	Surface Treatment	Specific Weight	Expansion Coefficient
UNI 9006/1 Al Mg 0.5 Si 0.4 Fe 0.2	EN AW 6060 T6	Electrostatic Painting	2.70 kg/dm ³	0.024 mm/(m °C)



VACUUM RATING

0-28 Hg



FLUIDS

Compressed Air
Vacuum
Inert Gas (NITROGEN-ARGON)



THREADS

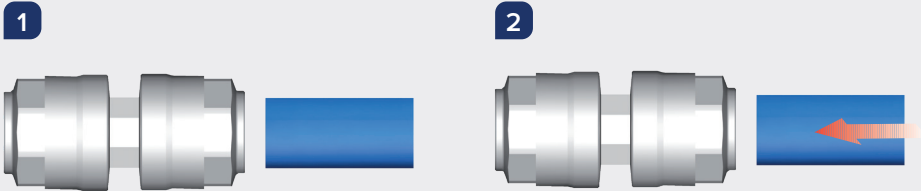
Flanged Tube (UNI EN 1092-4 PN 16) (ANSI 150-LB)
Female threads in conformity with ISO 228

SPECIFICATIONS & ASSEMBLING GUIDE



ASSEMBLING Ø20 | Ø25 | Ø32 | Ø40

- 1 Fittings of Ø20 | Ø25 | Ø32 | Ø40 are pre-assembled.
Tubes of 4m and 6m are pre-coated, calibrated and burred.
- 2 Push tube into the fitting for automatic connection.
- 3 In case of fitting disassembling, use the torques as in the chart to re-assemble the fitting.

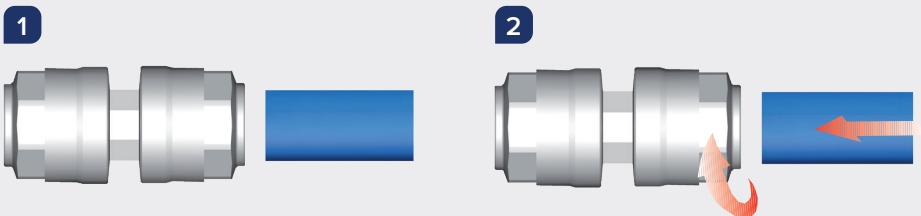


Ø mm	Torque specifications
20	3 Nm
25	3 Nm
32	4 Nm
40	6.5 Nm



ASSEMBLING Ø50 | Ø63

- 1 Fittings of Ø50 | Ø63 are pre-assembled with nut untwisted to help tube connection.
Tubes of 4m and 6m are pre-coated, calibrated and de-burred.
- 2 Push tube into the fitting for connection and tighten the nut using torques as in the chart.

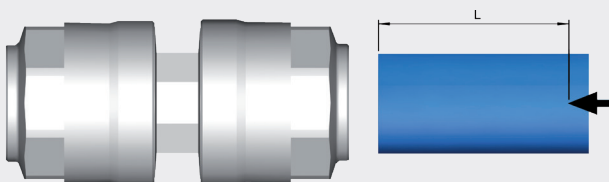


Ø mm	Torque specifications
50	45 Nm
63	85 Nm



TUBE CONNECTION

The correct tube connection of tube is confirmed by the position of the arrow pre-stamp. If you need to cut the tube, mark the distance of tube to insert in the fitting.



Ø mm	L mm
20	31.5
25	38.5
32	46
40	52
50	57.5
63	63.5

